

Built for Industrial Excellence WHEEL BLOCK

CAPACITY RANGE UPTO 50 TONS

CARL STAHL
Craftsman

Craftsman Wheel Blocks are engineered for exceptional performance and reliability, developed by our team of experts with years of industry experience. The modular system offers quick and cost-effective solutions tailored to your specific needs. Made from spheroidal graphite cast iron, the CRWB housing, cover, and wheel ensure structural integrity. Bearings are thoughtfully chosen to match practical load conditions, providing low maintenance. Available in a range of load capacities, the wheels are designed to meet the evolving demands of industry.

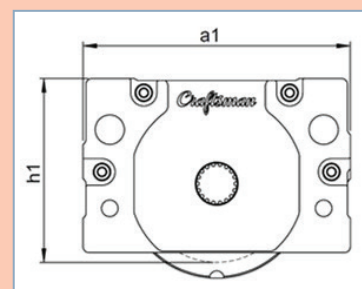
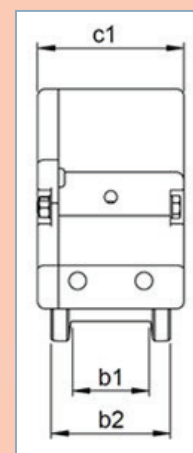


- 1. Housing
- 2. Bearings
- 3. Wheel
- 4. Cover

TECHNICAL DATA

Crane Application

MODEL/ WHEEL DIA	WEIGHT (KG)	DIMENSIONS (MM)					
		a1	b1	b2	Rail Width	c1	h1
crwb 125	12.5	230	62	82	50	102	151
crwb 160	22.5	279	65	97	50	119	189
crwb 200	38	340	82	114	75	136	244
crwb 250	65.5	385	85	117	80	161	290
crwb 320	117.5	470	85	125	80	190	362
crwb 400	196	580	110	150	100	214	448
crwb 500	295	700	110	150	100	246	566



www.carlstahlcraftsman.com

WHEEL BLOCK



Applications: Crane Systems | Transfer Carts | Lifting Platforms | Conveying System

Craftsman Travel Drives feature a parallel shaft helical gearbox paired with an electric motor, delivering an efficient and compact drive solution. The gears, made of case-hardened alloy steel and profile-corrected, are designed to maximize

transmissible torque. Both gears and bearings are oil bath or splash lubricated for quiet operation and enhanced reliability. The electric motors are three-phase induction types, meeting the latest IEC/IS standards.

CRANE APPLICATION

MODEL/ WHEEL DIA	PIN CONNECTION	END CONNECTION	TOP CONNECTION	SIDE CONNECTION
crwb 125	✓	✓	✓	#Other Applications
crwb 160	✓	✓	✓	
crwb 200	✓	✓	✓	
crwb 250	✓	✓	✗	
crwb 320	✓	✗	✗	
crwb 400	✓	✗	✗	
crwb 500	✓	✗	✗	

KEY COMPONENTS



WHEEL BLOCK FEATURES

- Ready-made solutions for crane manufacturers
- Wheels fully machined from spheroidal cast iron (SG-700/2)
- Double-flanged wheel for wheel block
- Robust grey iron housings
- Wheel flange wear indicator for easy inspection
- Ball/taper roller bearings for long service life
- Center mark in housing for easy span setting
- Modular design for various mounting positions
- Easy dismantling and maintenance for cranes and other applications



TRAVEL GEAR BOX

- Case-hardened, precision ground gears for smooth, long-lasting operation
- Gears immersed in oil/grease for quiet, smooth, and cool performance
- Standard travel speeds: 20, 30, 40 m/min at 50 Hz
- Easy dismantling without removing wheel blocks

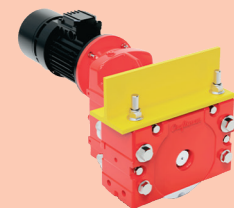


TRAVEL MOTOR

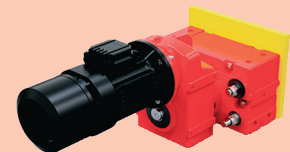
- Heavy-duty motor with integrated brake and fan cooling
- Asbestos-free brake disc lining with high friction and long lifespan
- IP54 enclosure rating and F-class insulation
- Suitable for 3-phase, 415V±10%, 50Hz AC supply

UNBEATABLE HANDLING,
UNBELIEVABLE PRICES.
YOUR ULTIMATE LIFTING
SOLUTION!

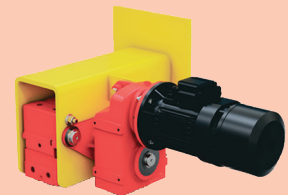
TYPES OF CONNECTIONS



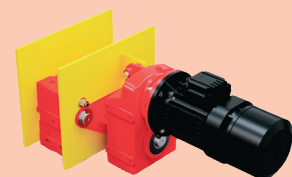
TOP CONNECTION



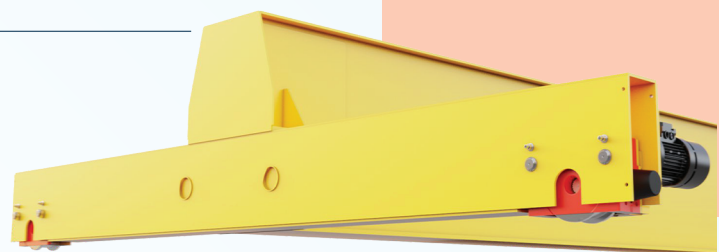
SIDE CONNECTION



END CONNECTION



PIN CONNECTION



CARL STAHL CRAFTSMAN ENTERPRISES PRIVATE LIMITED.

134/4, Sangothipalayam Road, Arasur, Coimbatore-641 407, Tamil Nadu, India.
E-mail: sales@carlstahlcraftsman.com, Sales contact no: +91 63844 04095
Website: www.carlstahlcraftsman.com

