

Seamless Movement with
Exemplary Standards

ALUMINIUM OVERHEAD XY CRANE SYSTEM

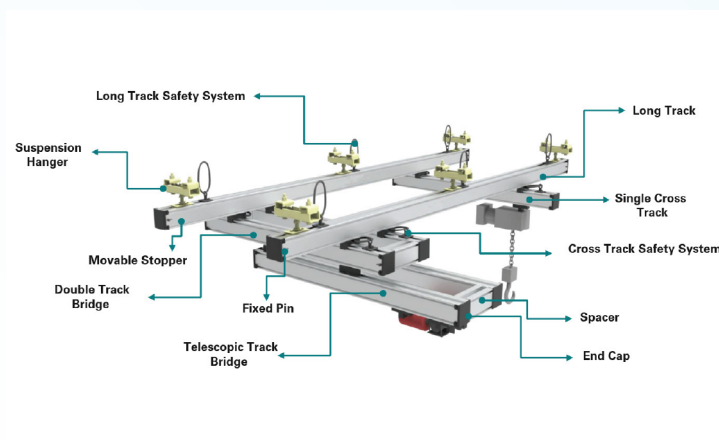


The aluminium overhead XY crane system ensures effortless material handling with its lightweight yet robust design. Its modular construction allows easy installation, while high load capacity (up to 2 tons) and ergonomic operation enhance efficiency and safety. Ideal for lifting and positioning across industries.

KEY FEATURES

- ▲ Lightweight, ergonomic design with strong bearing capacity
- ▲ 5 profile types, up to 2 tons, for versatility and customization
- ▲ Modular design for easy installation with multiple safety protections
- ▲ **Optional conveying units:** Spring pipe, tow chain, sliding wire, or pneumatic/electric units with curve profiles or 2-meter radius.
- ▲ Hanging parts exceed 5 times safety factor for secure investment
- ▲ Rated load options for smooth upward load handling
- ▲ Push-pull force <0.8% of the safe working load (e.g., <0.8 kg for 100 kg load)
- ▲ Secondary protection devices for added safety

ASSEMBLY & NOMENCLATURES

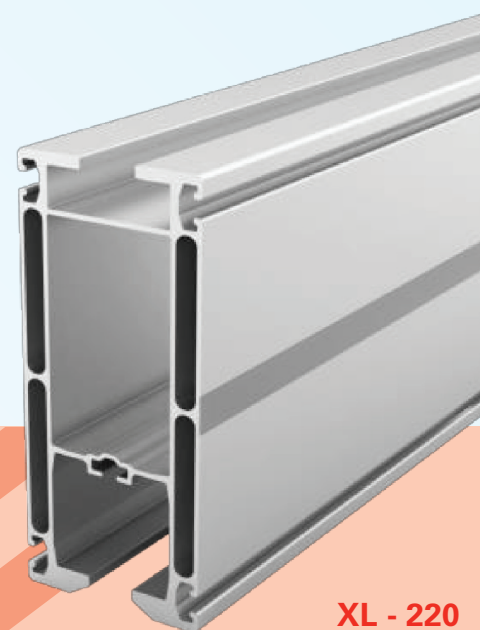


APPLICATIONS

MANIPULATOR

NUT RUNNER APPLICATION

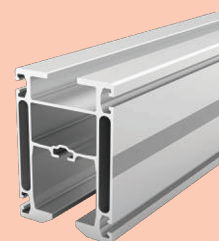
HOIST APPLICATION



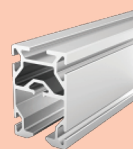
XL - 220
1250 Kg



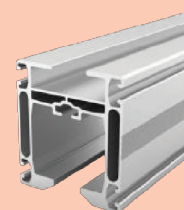
L - 180
800 Kg



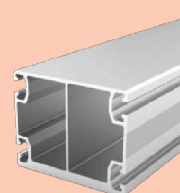
M - 140
550 Kg



Tool Rail
Upto 75 Kg



S - 105
275 Kg

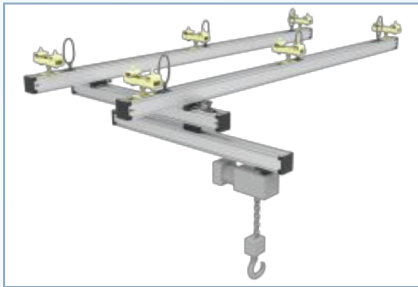


V- Reinforcement
with M/L & XL
Update 2 Tons

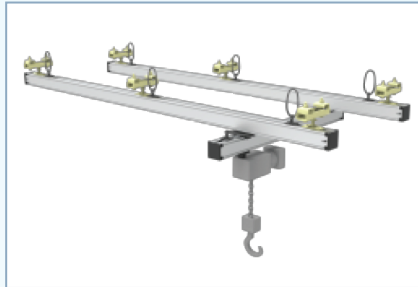
THE ALUMINIUM OVERHEAD XY CRANE SYSTEM



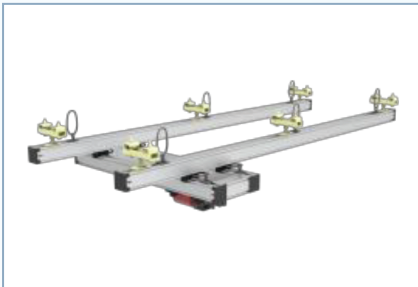
TYPES



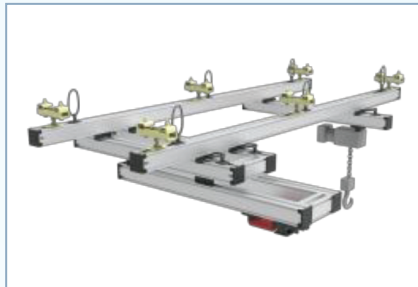
SINGLE GIRDER TELESCOPIC TYPE



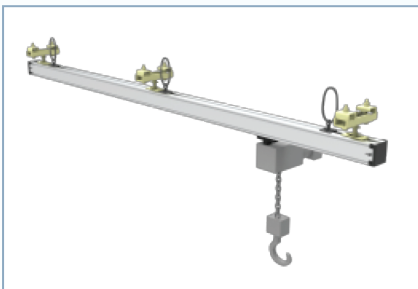
SINGLE GIRDER CRANE



DOUBLE GIRDER CRANE



DOUBLE GIRDER TELESCOPIC TYPE



MONORAIL SUSPENSION TYPE

COMPONENTS

- ▲ Aluminium alloys
- ▲ Modular design with 4 side slots for track joining
- ▲ 1 slot for movable stopper
- ▲ Reinforced trolley area for safer heavy loads
- ▲ Chamfer and radius ensure smooth trolley alignment and movement
- ▲ Reinforced profile with central ribs to prevent deflection
- ▲ Tool rails for quick application of tools, spring balancers, etc

BENEFITS

- ▲ Longer lifespan than steel
- ▲ 2.5x lighter than steel
- ▲ Anodized layer for smoother track
- ▲ No paint chipping issues
- ▲ Wear-resistant for increased durability
- ▲ Extends nylon roller lifespan
- ▲ Lower elasticity reduces vibration.

CARL STAHL CRAFTSMAN ENTERPRISES PRIVATE LIMITED.

134/4, Sangothipalayam Road, Arasur, Coimbatore-641 407, Tamil Nadu, India.
E-mail: sales@carlstahlcraftsman.com, Sales contact no: +91 63844 04095
Website: www.carlstahlcraftsman.com

